



PiCOT
ROULEUSES DE TôLES
ROLL BENDING MACHINES
since 1864



**FRENCH MANUFACTURER SINCE 1864
ROLLING SPECIALIST**

Large industrial series

The know-out of AMB PICOT meets all technical requirements and sectors of activity.

The company is at the cutting edge of innovation to satisfy the needs of its customers in the field of boilermaking and Industry.

With its range of 2, 3 and 4 rolls, it offers you roll bending machines adapted to all your works and a rolling assistant (Easynroll patent) to limit your dependence on operators.

This efficient tool altogether with your experience gives the actors of the boilermaking and the to-day's industry new opportunities !

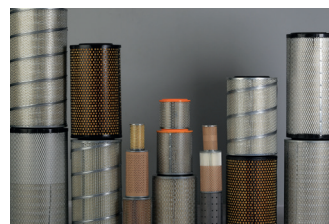
The advantages of AMB PICOT

- 2-rolls urethane bending machine
- Perfect pre-bending of both edges without returning the metal sheet
- Pneumatic, electric or hydraulic adjustment pinch roller
- Possibility of multi-radius parts
- Plug-and-play machine

> THEY TRUST US

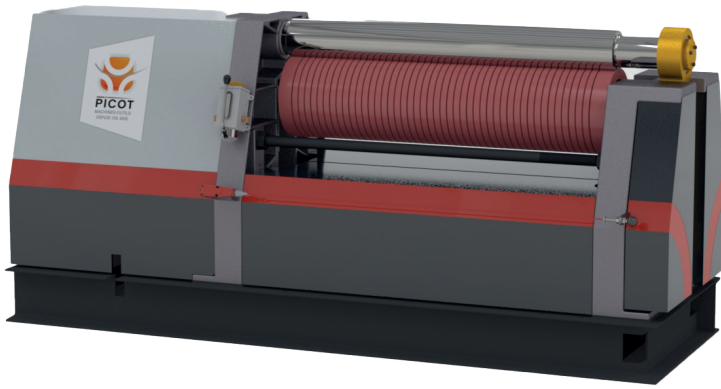


> OUR ACHIEVEMENTS



ambpicot.com

AMB PICOT - ZA de Charpenay 69210 LENTILLY - FRANCE
Tél. +33 (0) 4 74 01 85 05 - contact@ambpicot.com



AMB PICOT offers you its R2p or R2h model specially suitable for rolling thin sheet metal in large capacity. This rolling machine, 100% hydraulic or 100% electric, is available in several versions: with digital control or with digital control and Easyroll rolling assistance.

Our 2 rolls bending machines consist of a steel upper roll and a urethane coated lower roll. The steel roller or the mandrels (tooling tubes) act like a punch, the urethane roller being the matrix. Given the significant pressure exerted between the upper steel roller and the urethane roller, as well as our anti-deflection system, this machine allows rapid bending without residual flats and obtaining perfectly straight edges.

Large industrial series range

2 Rolls	Useful length (mm)	*Maximum thickness (mm)			Diam. Upper Roll (mm)	Diam. urethane roll
		Carbon Steel	Stainless steel	Alum.		
R2ep 50-15	500	1,5	0,75	3	87,5	152,5
R2ep 65-12	650	1,2	0,6	2,4	90	152,5
R2e/h 50-50	500	5	2,5	10	152,5	305
R2e/h 60-40	600		2	8	152,5	305
R2e/h 60-50		5	2,5	10	180	305
R2e/h 80-30	800	3	1,5	6	152,5	305
R2e/h 80-40		4	2,5	8	180	305
R2e/h 80-50		5	2,5	10	205	305
R2e/h 100-25	1000	2,5	1,25	5	152,5	305
R2e/h 100-30		3	1,5	6	180	305
R2e/h 100-40		4	2,5	8	205	305
R2e/h 120-25	1200	2,5	1,25	5	180	305
R2e/h 120-40		4	2	8	205	305
R2e/h 150-30	1500	3	1,5	6	205	305
R2e/h 180-15	1800	1,5	0,75	3	205	305

* The characteristics are given for steel type S235 (Yield Strength 240 N/mm²) and are not contractual.

Standard equipment

- > Rollers drive by independent electric motor
- > Urethane die roll
- > Easyroll digital control interface for R2e and R2h versions
- > Progressive controls on all movements

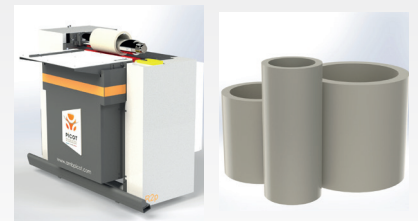
OPTIONS / ACCESSORIES



> Easyroll control panel



> CE package (For easyroll version) Safety zone by laser scanners



> Tables, beams, ejector, ...



> Join us on social media
@AmbPicot

ambpicot.com